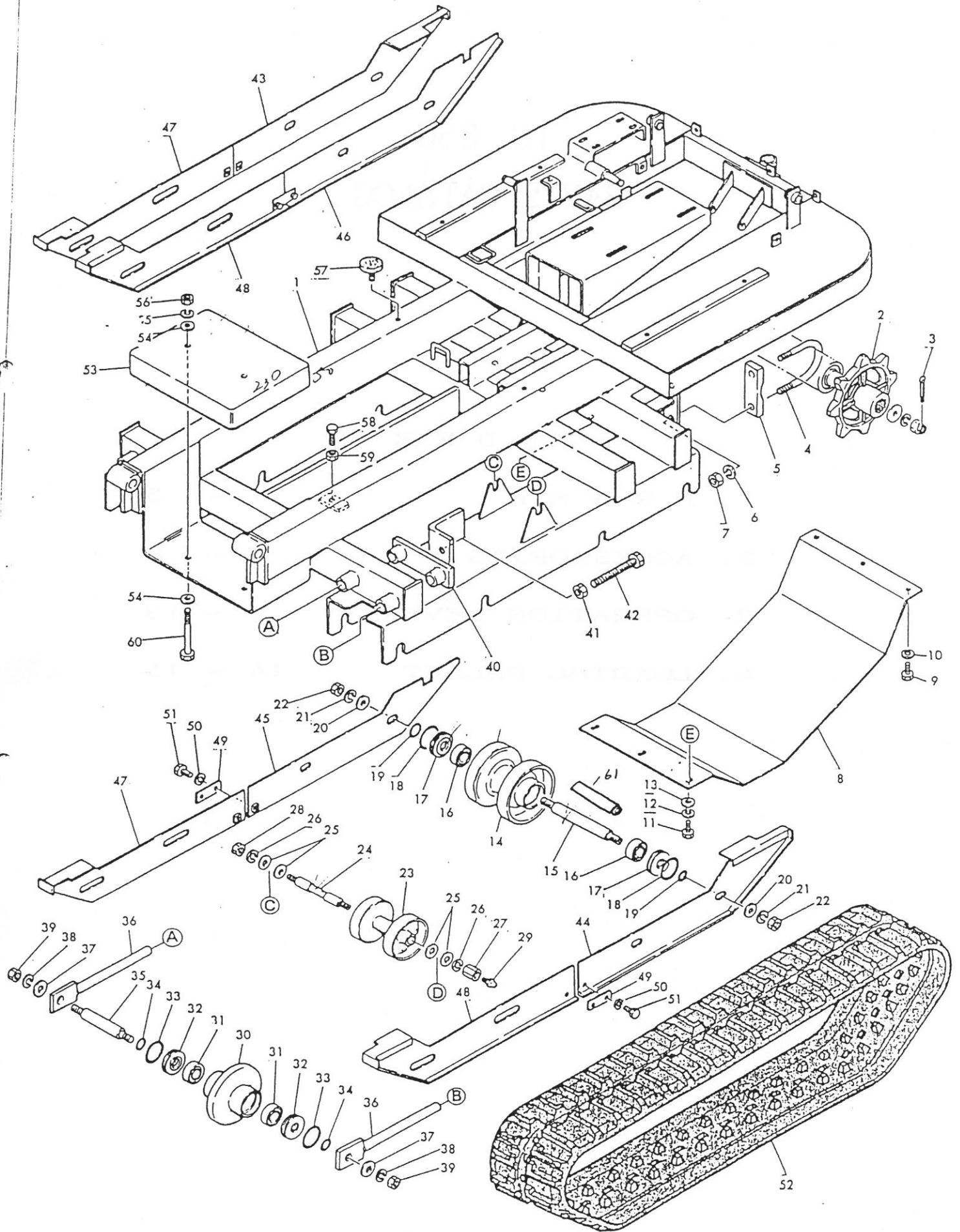


# TC 850 PARTS CATALOG

## I N D E X

1. F R A M E	1 ~ 3
2. ACCESSORIES	4 ~ 8
3. OPERATION LEVERS	9 ~ 13
4. LOADING PALLET	14 ~ 15

Figure 1 Frame



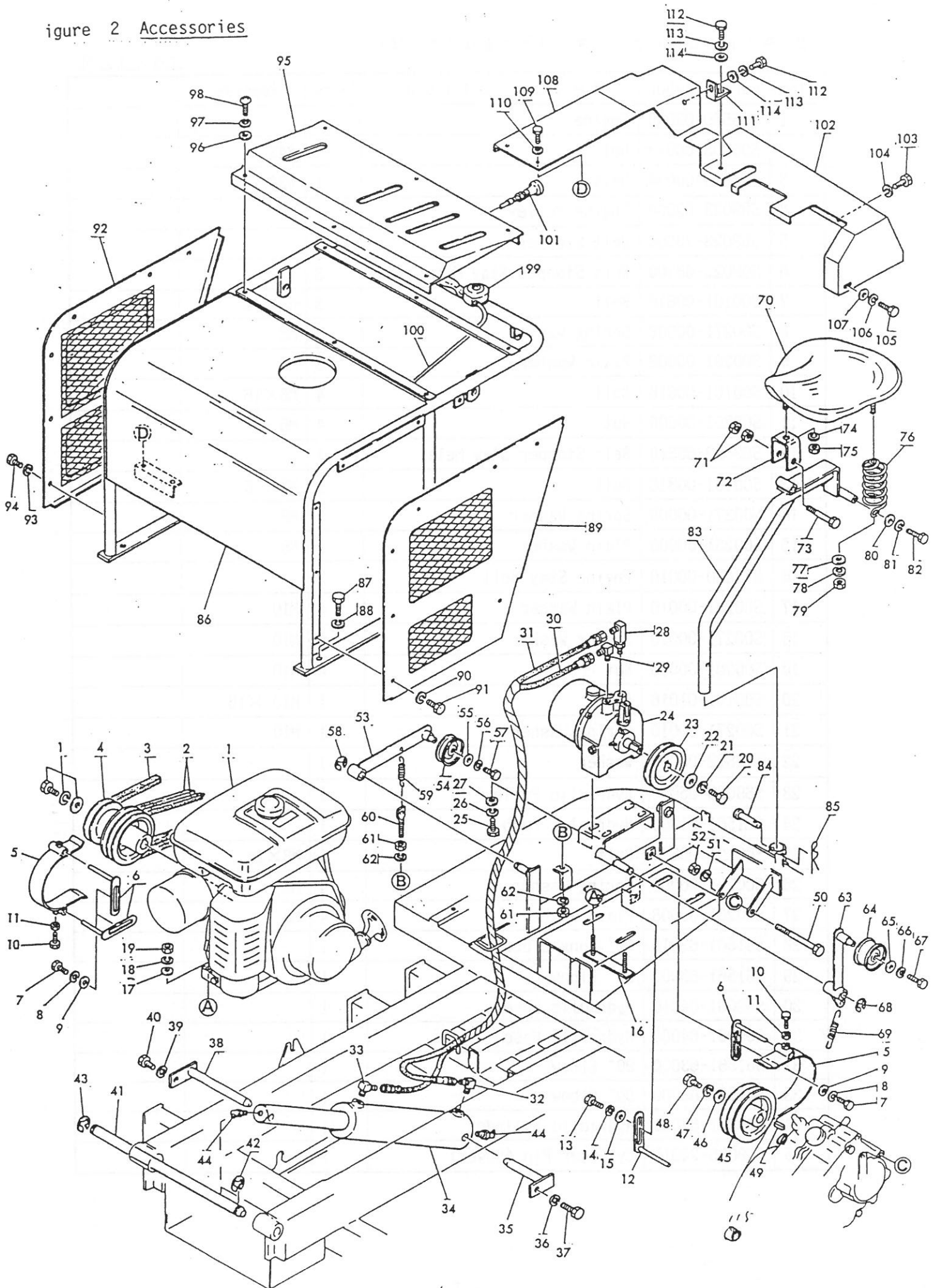
## ① Frame (Figure 1)

No. 1/2

Item	Parts Number	Description	Q'ty	Remarks
1	S69021-90000	Frame	1	
2	S69011-30100	Drive Sprocket	2	
3	S00301-04040	Cotter Pin	2	φ4 ×40
4	S65310-70000	U Bolt	2	
5	S69017-20100	Stay Plate	2	
6	S00271-00012	Spring Washer	4	M12
7	S00201-00012	Nut	4	M12
8	S69029-50000	Protector	1	
9	S00101-00812	Bolt	3	M8×12
10	S00271-00008	Spring Washer	3	M8
11	S00101-00812	Bolt	3	M8×12
12	S00271-00008	Spring Washer	3	M8
13	S00261-00008	Plain Washer	3	M8
14	S69015-50100	Front Idler	8	
15	S69015-60100	Idler Axis	8	
16	S00401- <del>6</del> <sup>4</sup> 6205	Bearing	16	6205 (2NS)
17	S61510-43001	Collar (Dust Protect)	16	
18	S00523-00500	O-Ring	16	G50
19	S00523-00250	O-Ring	16	G25
20	S00261-00020	Plain Washer	16	M20
21	S00271-00020	Spring Washer	16	M20
22	S00204-00020	Nut	16	M20 ×P1.5
23	S60615-70000	Track Roller	2	
24	S60615-80000	Roller Axis	2	
25	S00261-00014	Plain Washer	8	M14
26	S00271-00014	Spring Washer	4	M14
27	S60660-60000	Nut	2	
28	S00201-00014	Nut	2	M14
29	S00606-60000	Grease Nipple	2	UNF 1/4 28 Mount
30	S69015-30100	Front Idler	2	
31	S00401- <del>6</del> <sup>4</sup> 6205	Bearing	4	6205 (2NS)
32	S61510-43001	Collar (Dust Protect)	4	
33	S00523-00500	O-Ring	4	G50
34	S00523-00250	O-Ring	4	G25
35	S69015-40100	Front Idler Axis	2	



figure 2 Accessories



② Accessories (Figure 2)

No. 1/4

Item	Parts Number	Description	Q'ty	Remarks
1	S65560-02000	Engine	1	
2	S00803-00043	Belt	2	B43
3	S00803-00034	Belt	1	B34
4	S69023-02000	Engine Pulley	1	
5	S69023-70000	Belt Stopper	2	
6	S69022-66300	Belt Stopper Stay Metal	3	
7	S00101-00816	Bolt	3	M8×16
8	S00271-00008	Spring Washer	3	M8
9	S00261-00008	Plain Washer	3	M8
10	S00101-00616	Bolt	4	M6×16
11	S00201-00006	Nut	4	M6
12	S69022-66310	Belt Stopper Stay Metal	1	
13	S00101-00816	Bolt	1	M8×16
14	S00271-00008	Spring Washer	1	M8
15	S00261-00008	Plain Washer	1	M8
16	S74420-00010	Engine Stay Bolt	2	
17	S00261-00010	Plain Washer	4	M10
18	S00271-00010	Spring Washer	4	M10
19	S00201-00010	Nut	4	M10
20	S00101-01016	Bolt	1	M10 ×16
21	S00271-00010	Spring Washer	1	M10
22	S70822-00000	Washer	1	
23	S69023-05000	Hydraulic Pulley	1	
24	S61561-61000	Hydraulic Pump	1	
25	S00101-00820	Bolt	4	M8×20
26	S00271-00008	Spring Washer	4	M8
27	S00261-00008	Plain Washer	4	M8
28	S61561-63010	90° Long Elbow	1	
29	S61561-63000	90° Elbow	1	
30	S69061-64010	Hydraulic Hose	1	
31	S69061-64000	Hydraulic Hose	1	
32	S61561-63000	90° Elbow	1	
33	S61561-63000	90° Elbow	1	
34	S80861-62001	Hydraulic Cylinder	1	
35	S69025-24010	Cylinder Pin (Lower)	1	

② Accessories (Figure 2)

No. 2/4

Item	Parts Number	Description	Q'ty	Remarks
36	S00271-00008	Spring Washer	1	M8
37	S00101-00816	bolt	1	M8×16
38	S69025-24000	Cylinder Pin (Upper)	1	
39	S00271-00008	Spring Washer	1	M8
40	S00101-00816	Bolt	1	M8×16
41	S69025-20000	Loading Pallet Support Pin	1	
42	S00368-00019	Stop Ring	1	E19
43	S00368-00019	Stop Ring	1	E19
44	S0060M6C.P1	Grease Nipple	2	
45	S69023-00000	Transmission Input Axis Pulley	1	
46	S60022-01000	Washer	1	
47	S00101-00820	Bolt	1	M8×20
48	S00271-00008	Spring Washer	1	M8 (Semicircle)
49	<del>S03000-05530</del> S00101-10115	Connecting Plate	1	5 × 5 × 30
50	S00101-10115	Bolt	1	M10 × 115 (Semi)
51	S00261-00010	Plain Washer	1	M10
52	S00201-00010	Nut	1	M10
53	S69022-81000	Hydraulic Tension Arm	1	
54	S60661-10000	Tension Pulley	1	For 55T x 1 pce.
55	S60660-70000	Washer	1	
56	S00271-00016	Spring Washer	1	M6
57	S00101-00612	Bolt	1	M6×12
58	S00368-00012	Stop Ring	1	E12
59	S60621-05000	Spring	1	
60	S72522-21000	Spring Metal	1	
61	S00201-00008	Nut	2	M8
62	S00271-00008	Spring Washer	2	M8
63	S69022-83000	Traction Tension Arm	1	
64	S70461-10000	Tension Pulley	1	For 55T x 2 pcs.
65	S60660-70000	Washer	1	
66	S00271-00006	Spring Washer	1	M6
67	S00101-00612	Bolt	1	M6×12
68	S00368-00012	Stop Ring	1	E12
69	S60621-04000	Spring	1	
70	S61261-71000	Saddle	1	

## ② Accessories (Figure 2)

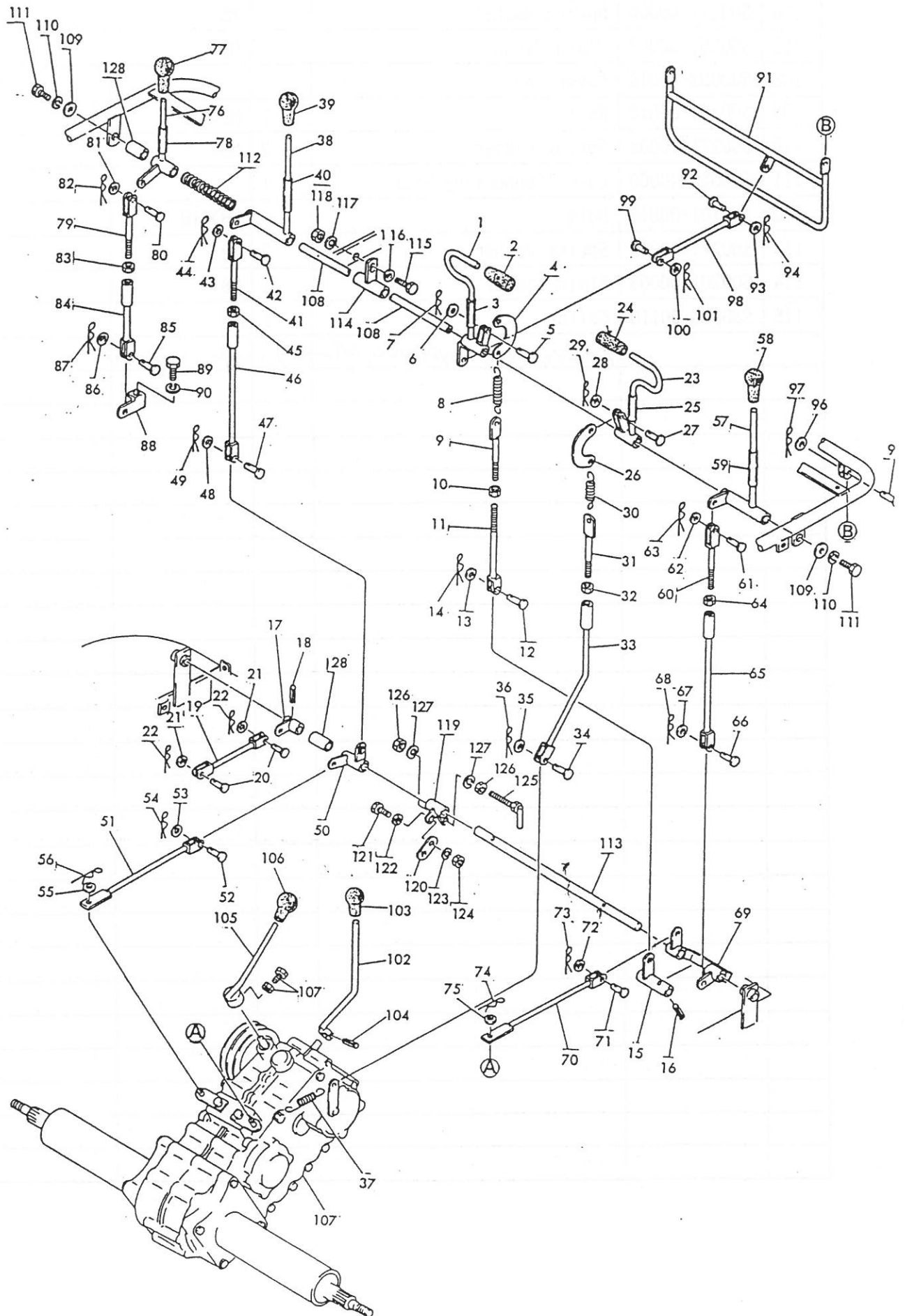
No. 3/4

Item	Parts Number	Description	Q'ty	Remarks
71	S00201-00010	Nut	2	M10
72	S63122-68000	Saddle Stay Metal	1	
73	<del>S00101-01070</del> S01200-00148	Bolt	1	M10 × 70 (Semi)
74	S00271-00010	Spring Washer	1	M10
75	S00201-00010	Nut	1	M10
76	S63121-07000	Spring	2	
77	S00261-00010	Plain Washer	2	M10
78	S00271-00010	Spring Washer	2	M10
79	S00201-00010	Nut	2	M10
80	S00261-00008	Plain Washer	2	M8
81	S00271-00008	Spring Washer	2	M8
82	S00101-00825	Bolt	2	M8×25
83	S69024-81000	Saddle Stand	1	
84	S61560-80000	Pin	1	
85	S00311-00010	Pin	1	
86	S69023-10000	Handle	1	
87	S00101-01018	Bolt	4	M10 × 18
88	S00271-00010	Spring Washer	4	M10
89	S69023-51010	Handle Cover (LH)	1	
90	S00271-00008	Spring Washer	7	M8
91	S00101-00816	Bolt	7	M8×16
92	S69023-51000	Handle Cover (RH)	1	
93	S00271-00008	Spring Washer	7	M8
94	S00101-00816	Bolt	7	M8×16
95	S69026-50000	Operation Lever Guide Plate	1	
96	S00261-00008	Plain Washer	6	M8
97	S00271-00008	Spring Washer	6	M8
98	S00151-00816	Screw Bolt	6	
99	S60661-32000	Throttle Lever	1	
100	S72760-44000	Throttle Wire	1	
101	S22444-00111	Choke Wire	1	
102	S69023-40000	Cover (A)	1	
103	S00101-00816	Bolt	3	M8×16
104	S00271-00008	Spring Washer	3	M8
105	S00101-00816	Bolt	1	M8×16





Figure 3 Operation Levers



③ Operation Levers (Figure 3)

No. 1/4

Item	Parts Number	Description	Q'ty	Remarks
1	S69023-32000	Traction Lever	1	
2	S60660-30010	Grip	1	
3	S60661-51000	Vinyl Pipe	1	
4	S27372-20010	Rod	1	
5	S60660-08000	Pin	1	
6	S00261-00006	Plain Washer	1	M6
7	S00311-99006	Pin with Stopper	1	M6
8	S40121-00032	Spring	1	
9	S69024-07000	Traction Rod	1	
10	S00201-00008	Nut	1	M8
11	S69024-07010	Traction Rod	1	
12	S60660-80000	Pin	1	
13	S00261-00006	Plain Washer	1	M6
14	S00311-99006	Pin with Stopper	1	M6
15	S69022-47000	Traction Metal (A)	1	
16	S00303-00525	Spring Pin	1	$\phi 5 \times 25$
17	S69022-47010	Traction Metal (B)	1	
18	S00303-00525	Spring Pin	1	$\phi 5 \times 25$
19	S69024-07020	Traction Rod	1	
20	S60660-80000	Pin	2	
21	S00261-00006	Plain Washer	2	M6
22	S00311-99006	Pin with Stopper	2	<del>M6</del> $\phi 6$
23	S69023-33000	Brake Lever	1	
24	S60660-30020	Grip	1	
25	S60661-51000	Vinyl Pipe	1	
26	S27372-20010	Rod	1	
27	S60660-80000	Pin	1	
28	S00261-00006	Plain Washer	1	M6
29	S00311-99006	Pin with Stopper	1	M6
30	S61721-05000	Spring	1	
31	S69024-07000	Traction Rod	1	
32	S00201-00008	Nut	1	M8
33	S69024-02000	Brake Rod	1	
34	S25996-11080	Pin	1	
35	S00261-00008	Plain Washer	1	M8

③ Operation Levers (Figure 3)

No. 2/4

Item	Parts Number	Description	Q'ty	Remarks
36	S00311-99008	Pin with Stopper	1	M8
37	S60621-04010	Spring	1	
38	S69023-34000	Side Crutch Lever (RH)	1	
39	S60660-30030	Grip	1	
40	S60661-51010	Vinyl Pipe	1	
41	S65524-00030	Side Crutch Rod (A)	1	
42	S25996-11080	Pin	1	
43	S00261-00008	Plain Washer	1	M8
44	S00311-99008	Pin with Stopper	1	M8
45	S00201-00008	Nut	1	M8
46	S69024-03010	Side Crutch Rod	1	
47	S25996-11080	Pin	1	
48	S00261-00008	Plain Washer	1	M8
49	S00311-99008	Pin with Stopper	1	
50	S69022-44000	Side Crutch Metal (RH)	1	
51	S69024-03020	Side Crutch Rod	1	
52	S25996-11080	Pin	1	
53	S00261-00008	Plain Washer	1	M8
54	S00311-99008	Pin with Stopper	1	M8
55	S00261-00008	Plain Washer	1	M8
56	S00311-99008	Pin with Stopper	1	M8
57	S69023-34010	Side Crutch Lever (LH)	1	
58	S60660-30030	Grip	1	
59	S60661-51010	Vynil Pipe	1	
60	S65524-00030	Side Crutch Rod (A)	1	
61	S25996-11080	Pin	1	
62	S00261-00008	Plain Washer	1	M8
63	S00311-99008	Pin with Stopper	1	M8
64	S00201-00008	Nut	1	M8
65	S69024-03010	Side Crutch Rod	1	
66	S25996-11080	Pin	1	
67	S00261-00008	Plain Washer	1	M8
68	S00311-99008	Pin with Stopper	1	φ8
69	S69022-44010	Side Crutch Metal (LH)	1	
70	S69024-03020	Side Crutch Rod	1	

③ Operation Levers (Figure 3)

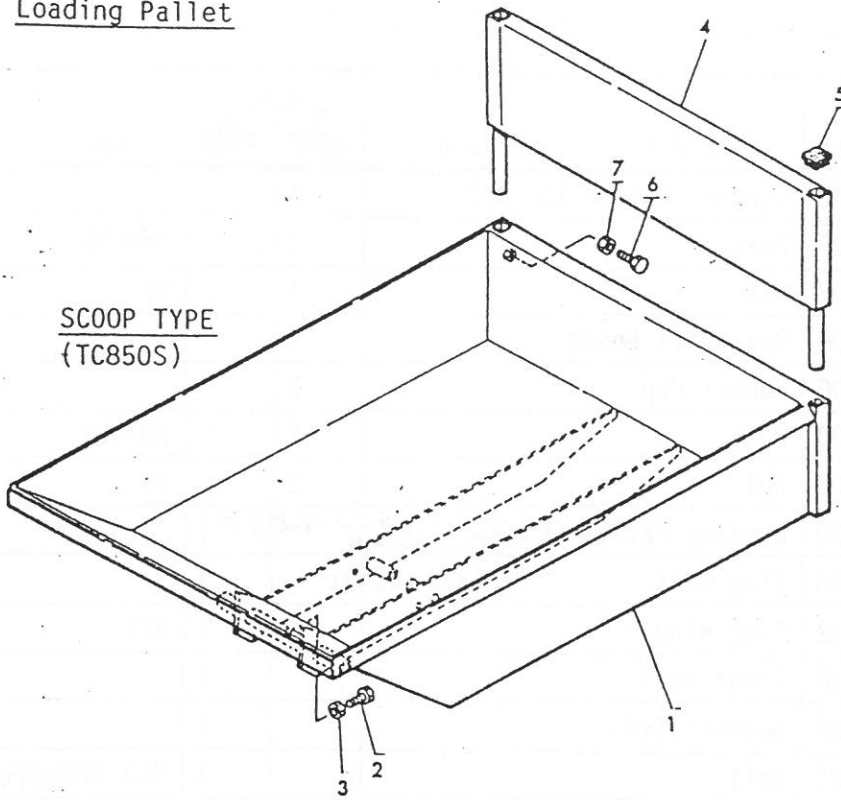
No. 3/4

Item	Parts Number	Description	Q'ty	Remarks
71	S25996-11080	Pin	1	
72	S00261-00008	Plain Washer	1	M8
73	S00311-99008	Pin with Stopper	1	M8
74	S00311-99008	Pin with Stopper	1	M8
75	S00261-00008	Plain Washer	1	M8
76	S69023-35000	Hydraulic Lever	1	
77	S61560-30000	Grrip	1	
78	S60661-51010	Vinyl Pipe	1	
79	S65524-00030	Side Crutch Rod (A)	1	
80	S25996-11080	Pin	1	
81	S00261-00008	Plain Washer	1	M8
82	S00311-99008	Pin with Stopper	1	M8
83	S00201-00008	Nut	1	M8
84	S69024-08000	Hydraulic Rod	1	
85	S25996-11080	Pin	1	
86	S00261-00008	Plain Washer	1	M8
87	S00311-99008	Pin with Stopper	1	M8
88	S69022-48000	Hydraulic Metal	1	
89	S00101-01020	Bolt	1	M10 ×20
90	S00271-00010	Spring Washer	1	M10
91	S69022-46000	Safety Device Metal Bar	1	
92	S60660-80000	Pin	1	
93	S00261-00006	Plain Washer	1	M6
94	S00311-99006	Pin with Stopper	1	M6
95	S60660-80000	Pin	2	
96	S00261-00006	Plain Washer	2	M6
97	S00311-99006	Pin with Stopper	2	M6
98	S69024-00000	Safety Device Rod	1	
99	S60660-80000	Pin	1	
100	S00261-00006	Plain Washer	1	M6
101	S00311-99006	Pin with Stopper	1	M6
102	S69023-30000	Main Speed Change Lever	1	
103	S60660-30030	Grip	1	
104	S00303-00628	Spring Pin	1	φ6 ×28
105	S69023-30010	Sub Speed Change Lever	1	

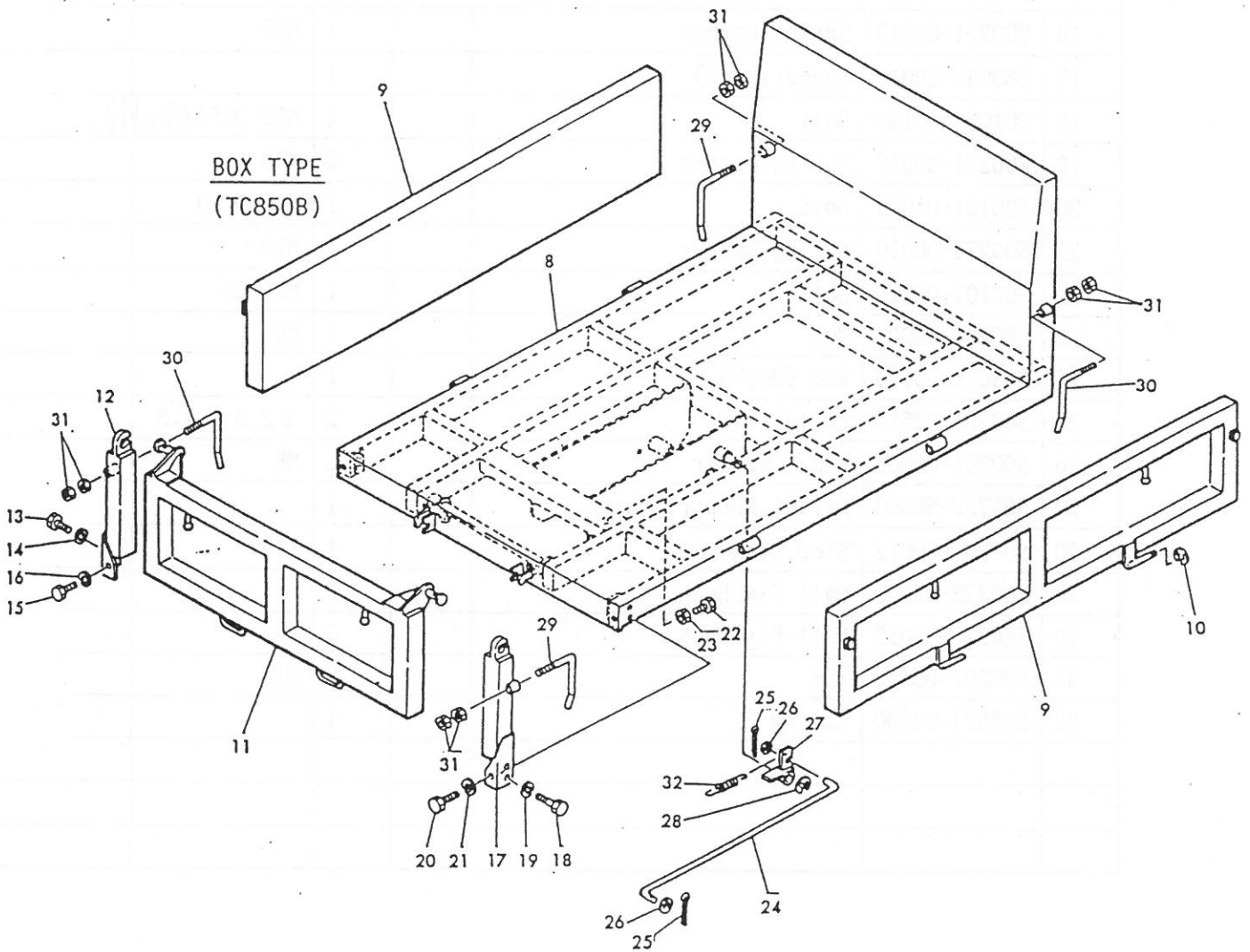


Figure 4 Loading Pallet

SCOOP TYPE  
(TC850S)



BOX TYPE  
(TC850B)



## ④ Loading Pallet (Figure 4)

No. 1/1

Item	Parts Number	Description	Q'ty		Remarks
			TC 850S	TC 850B	
1	S69026-00000	Loading Pallet (Scoop)	1		
2	S00101-00825	Bolt	1		M8×25
3	S00201-00008	Nut	1		M8
4	S69027-11000	Rear Wall Board	1		
5	S60562-10000	Rubber Cap	2		
6	S00101-00820	Bolt	2		M8×20
7	S00201-00008	Nut	2		M8
8	S69046-00000	Loading Pallet (Box)	1		
9	S69046-10000	Side Wall	2		
10	S00368-00012	Stop Ring		2	E12
11	S69046-10010	Front Wall		1	
12	S69046-20000	Support (RH)		1	
13	S01000-00195	Bolt		2	M10 ×50 (Full)
14	S00271-00010	Spring Washer		2	M10
15	S00101-01020	Bolt		1	M10 ×20
16	S00271-00010	Spring Washer		1	M10
17	S69046-20010	Support (LH)		1	
18	S01000-00195	Bolt		2	M10 ×50 (Full)
19	S00271-00010	Spring Washer		2	M10
20	S00101-01020	Bolt		1	M10 ×20
21	S00271-00010	Spring Washer		1	M10
22	S00101-00825	Bolt		1	M8×25
23	S00201-00008	Nut		1	M8
24	S69044-00000	Rod (Hook)		1	
25	S00301-02515	Cotter Pin		2	φ2.5 ×1.5
26	S00261-00008	Plain Washer		2	M8
27	S63722-50000	Pallet Support Metal		1	
28	S00368-00012	Stop Ring		1	E12
29	S60323-92000	Wall Fix Hook		2	
30	S60323-92010	Wall Fix Hook		2	
31	S00201-00010	Nut		8	M10
32	S60621-04000	Spring		1	